

# Health, Nutrition & Care

ESG expert investors event 2025  
BU deep dive presentation



dsm-firmenich 





# Health, Nutrition & Care

## Together elevating health.

In Health, Nutrition & Care, we elevate patient and consumer health at every life stage.

---

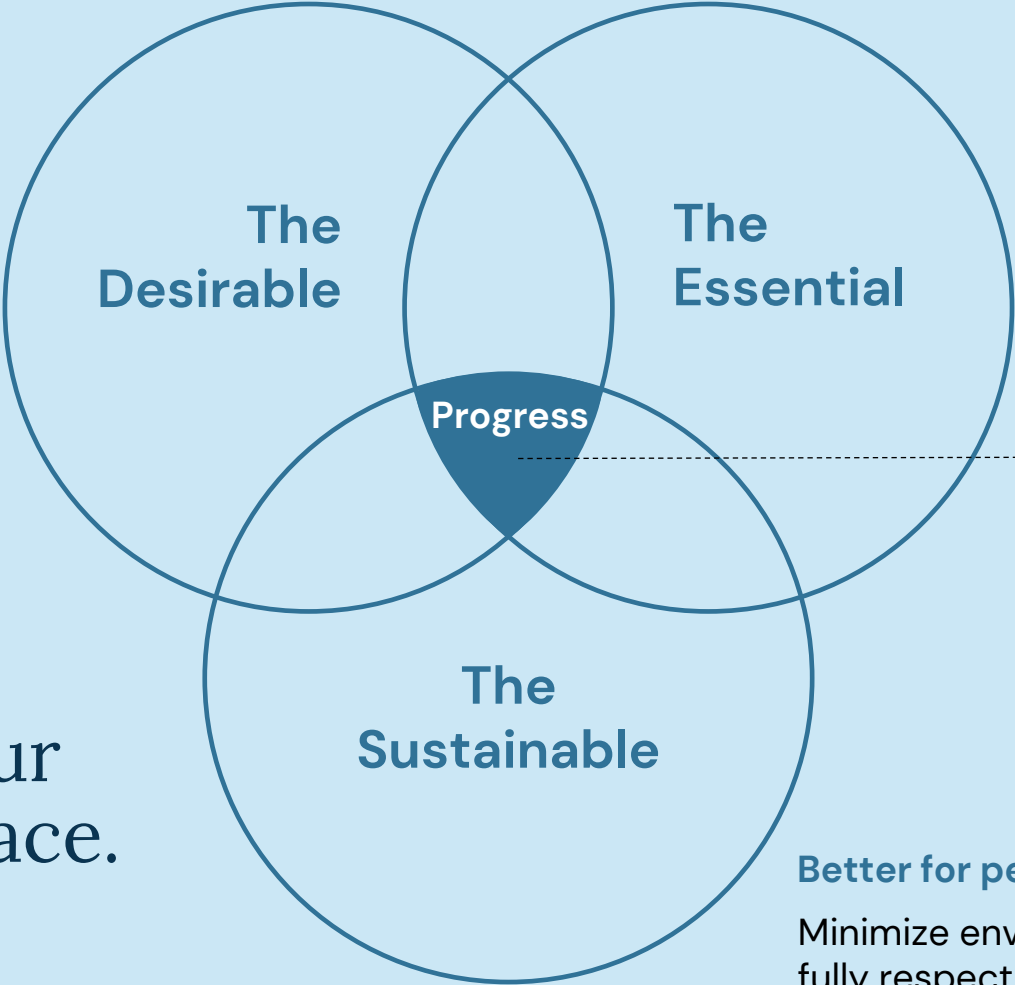
We provide science-backed health solutions aimed at minimizing their environmental impact while fully respecting human rights.

---

Our strong sustainability commitments and expert services help clients achieve their goals.

# Health, Nutrition & Care

**Science-backed, enjoyable solutions**  
Meet the ever-evolving needs of patients and consumers worldwide



**Preventative health**  
Elevate patient and consumer health at every life stage

- Nutrition improvement solutions
- Low carbon solutions
- Life's*<sup>®</sup> portfolio
- HMO portfolio
- Sustainability Imp'Act Card™
- Solution Imp'Act Calculator™

**Better for people and planet**  
Minimize environmental impact while fully respect human rights

Together, making our world a healthier place.  
Better for people and planet.

# Our 2030 targets



## Empowering lives, protecting our planet!

1 bn



### Nutrition improvement

Enable the micronutrient gap reduction of 1 billion vulnerable people by 2030

Preventative Health



Provide customized solutions to enhance health at every stage of life with minimal environmental impact

42%



### Scope 1 & 2 emission

Reduce absolute scope 1 and 2 GHG emissions by 42% in 2030 (vs. 2021)

25%



### Scope 3 emission

Reduce absolute scope 3 GHG emissions by 25% in 2030 (vs. 2021)



# Collaborating to end malnutrition

## The world need for nutrition

Malnutrition continues to be a major public health problem.

Over 3 billion people, in both low to middle income and developed countries, suffer from malnutrition or hidden hunger.

We believe essential and equitable nutrition is a human right.

## Our impact

Together with our partners, we enable the micronutrients' gap reduction of 1 billion vulnerable people by 2030.

We invest and innovate to unlock the potential of tomorrow's consumers through staple food fortification and public health supplementation.

Our premixes and Market Ready Solutions offer huge health and nutritional benefits with minimal additional environmental impact on the end use product.

In ~10 years, we grew Nutrition Improvement to a 100mio+ EUR sales business. Expected high single digit growth in the coming years.





# Fueling healthy life through preventative health

## Market need for healthy nutrition

The share of spend on preventative health vs. curative care is expected to increase from 20% today to 50%.

Growing awareness of preventative healthcare is fuelling demand for self-care solutions.

Preventative health solutions need to keep pace with consumers' lifestyle – in more sustainable ways.

## Our impact

We provide solutions to an expanding group of non-compromising consumers looking for clinically proven, natural, and sustainable solutions.

Our solutions feature an extensive vitamins portfolio and our ambitious, science-based GHG emission reduction targets, together with our European production facilities enable us to offer low-carbon vitamins.

For instance, our Dalry vitamin C has a 49% lower carbon footprint compared to the main alternative source.

DS sales growing ~ 40% faster than market in 2024.  
Projected DS growth for 2025 ~ x3 faster than market.



Together elevating health



Accelerate climate action



Design sustainable products



Discover more [here](#)





# Accelerating the Omega-3 shift from fish to algae

## Market needs for Omega-3

Omega-3s are essential for optimal health at every stage of life, and with a growing population, the demand for omega-3 is increasing.

Customers are struggling to differentiate themselves in a highly competitive and saturated market.

Pressure on the fishing industry and concern around heavy metal accumulation in marine sourced-material require an alternative to omega-3 from fish oil.

## Our impact

Using algae directly, we produce omega-3 independently of fishery activities, free from marine contaminants, and with a lower impact on marine biodiversity.

We cut down supply chain time, secure volumes and minimize price dependence on environmental factors.

We leverage our end-to-end partner capabilities, providing evidence-based, expert-powered solutions that are high quality, better-tasting, and higher-performing.

Algal Lipids grow aggressively and are set to be the undisputable leader in the algal omega-3 space.



Safeguard nature and biodiversity



Together elevating health



Discover more [here](#)



# Hand-in-hand with our customers

## Customer needs for sustainability progress

Sustainability demands collaboration from all stakeholders along the value chain.

Our customers need to collect data, set targets, and build roadmaps to achieve them.

One of their key challenges is ensuring data quality and effective data management.

## Our impact

We leverage our LCA expertise to generate primary data and offer expert support with excellence.

We share the sustainability credentials of our solution with full transparency through the Sustainability Imp'Act Card™.

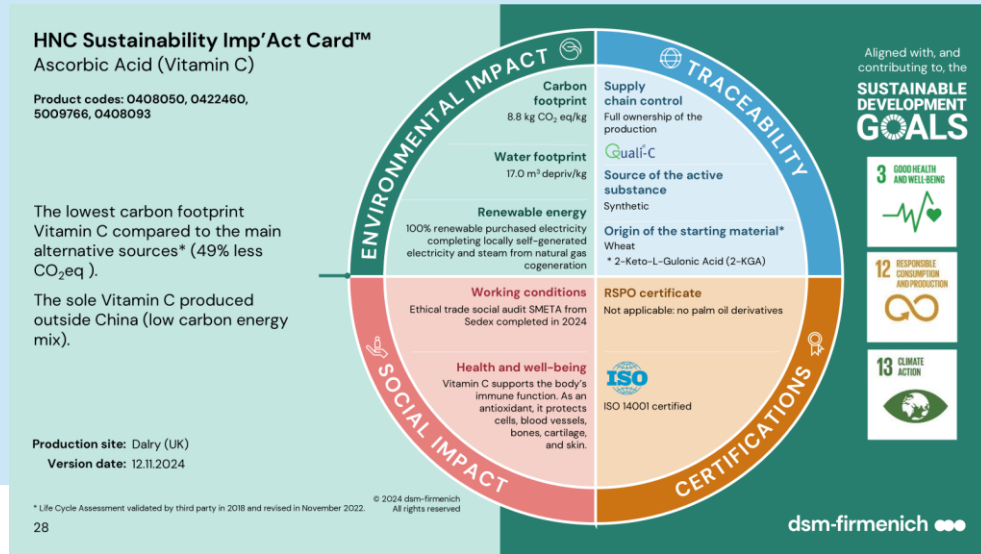
We offer emission calculations, including our premixes utilizing the Solution Imp'Act Calculator™ and product emission reduction roadmap.

100% of our core solutions have a Sustainability Imp'Act Card™.  
We have engagement with key global accounts.





# Pioneering sustainability with our capabilities to bring transparency and impact



**Solution Imp'Act Calculator** dsm-firmenich

**Customer and product information**

Customer: \_\_\_\_\_  
Solution type: \_\_\_\_\_  
Product name: \_\_\_\_\_  
Product code: \_\_\_\_\_  
Generator: name, function, BU: \_\_\_\_\_  
Generator: email address: \_\_\_\_\_  
Date: \_\_\_\_\_

**Sustainability performance**  
To display results, enter your data in the section "Calculation inputs"

Default		-	
Carbon footprint breakdown	Carbon footprint (kg CO <sub>2</sub> e/kg)	Carbon footprint (%)	
Ingredients			
Energy			
Packaging			
Transportation			
Total		0%	

**Calculation inputs**  
Define your scenario, select the respective premix, packaging type, transportation type and enter the solution composition.

Scenario description: Default

**Site, packaging & transportation specification**

Site & transportation specification

Packaging type: \_\_\_\_\_  
Transport type: \_\_\_\_\_  
Refrigeration: \_\_\_\_\_  
Distance to customer (km): \_\_\_\_\_

**Solution composition**

Premix composition - scenario

Check on totals: FALSE Please make sure the total quantity (column E) adds up to 1000 grams. Check on totals: FALSE Please make sure the total quantity (column M) adds up to 1000 grams.

Ingredients	Quantity (g/kg product)	Carbon footprint (kg CO <sub>2</sub> e/kg)	Carbon footprint (kg CO <sub>2</sub> e/kg)	Carbon footprint

## The Sustainability Imp'Act Card™

The Sustainability Imp'Act Card™ provides science-based metrics on environmental footprint, traceability, social impact and certifications at an ingredient level

## The Solution Imp'Act Calculator™

The Solution Imp'Act Calculator™ brings transparency and credible data on the sustainability impact of our straight forms and premix solutions

**We bring progress to life**