

Product name XY

Environmental Product Declaration

dsm-firmenich's commitment to sustainability

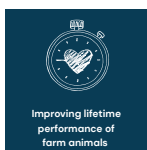
Sustainability is integral part of dsm-firmenich's Purpose led, Performance driven strategy.

Our strong growth platform is centered on developing innovative solutions addressing Nutrition & Health, Climate & Energy and Resources & Circularity. At dsm-firmenich, sustainability is not only our core value and a key responsibility, it is also an important business driver that is fully engrained in our purpose, strategy, business and operations.

Our Nutrition business focuses on animal nutrition (vitamins, enzymes, eubiotics, carotenoids, with premix and other specialty solutions), human nutrition (ingredients and solutions for food & beverages, as well as specialty nutrition, nutritional ingredients, consumer-branded products and personalized nutrition) and personal care and aroma ingredients.

By reducing the impact of our own operations, we enable our customers to become more sustainable, reduce their risk profile and to potentially benefit from value created from future carbon tax savings. We further step up our ambitions regarding the reduction of greenhouse gas emissions in line with the Paris Agreement, our energy efficiency and our use of renewable energy.

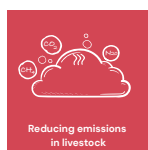
To be a leader in climate action it's important to lead by example. Therefore we, at dsm-firmenich, have introduced six sustainability platforms as part of our strategic initiative [We make it possible](#), aligned to the United Nations Sustainable Development Goals (SDGs).



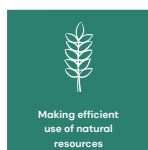
Improving lifetime performance of farm animals



Improving the quality of meat, milk, fish and eggs, while reducing food loss & waste



Reducing emissions in livestock



Making efficient use of natural resources



Reducing our reliance on marine resources



HELPING TACKLE ANTIMICROBIAL RESISTANCE

Reducing your environmental footprint by choosing Product name XY

The cradle-to-gate environmental footprint of 1 kg of Product name XY is given in the table below.

These values can be included to assess the environmental impact of Product name XY in your footprinting studies.

Impact category	Unit	Product name XY
Climate change	kg CO ₂ eq	1.31
Climate change - fossil	kg CO ₂ eq	1.46
Climate change - biogenic	kg CO ₂ eq	0.03
Climate change - Land use and Land use change	kg CO ₂ eq	-0.19
Ozone depletion	mg CFC ¹¹ eq	0.14
Ionising radiation	kBq U- ²³⁵ eq	0.12
Photochemical ozone formation	g NMVOC eq	4.17
Particulate matter	µdisease inc.	0.12
Human toxicity, non-cancer	µCTUh	0.06
Human toxicity, cancer	µCTUh	0.00
Acidification	mol H ⁺ eq	0.01
Eutrophication, freshwater	g P eq	0.60
Eutrophication, marine	g N eq	7.87
Eutrophication, terrestrial	mol N eq	0.04
Ecotoxicity, freshwater	kCTUe	0.03
Land use	Pt	46.56
Water use	m ³ deprivation	1.52
Resource use, fossils	MJ	15.45
Resource use, minerals and metals	mg Sb eq	8.16

Environmental footprint results according to alternative methods can be provided on request.

Life Cycle Assessment (LCA) standards used

dsm-firmenich routinely applies ISO 14000 series standards for Life Cycle Assessment (LCA).

The cradle to gate footprint results have been calculated using the latest version of the [Environmental Footprint \(JRC\) Method](#) investigating 19 impact categories (PEF).

The cradle to gate footprint was executed using an attributional approach.

Product name XY

Environmental Product Declaration

Background processes

For data on raw materials processes, background information from EcolInvent Database v3.8 of the Swiss Centre for Life Cycle Inventories was used, augmented with dsm-firmenich processes where necessary.

Validity of results

These results are valid specifically for the following product: Product name XY supplied by dsm-firmenich. This EPD is updated when there are significant changes.

Complementary LCA information can be provided on request, subject to a non-disclosure agreement.

This EPD is not meant for public disclosure therefore results cannot be used externally without the prior written permission of dsm-firmenich.

Critical review

This EPD is prepared in accordance with ISO 14021:2016, using dsm-firmenich's internal calculation and reporting processes assured by DNV.

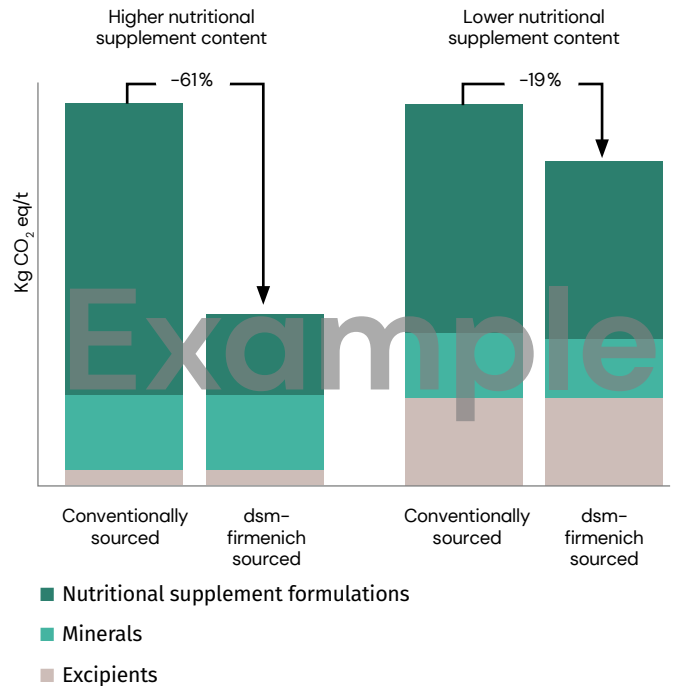


Optimizing performance and improving the sustainability of premixes

As a pioneer in animal nutrition and feed additives, we provide science-based products and solutions that support customers in a dynamic and ever-changing global market, to enhancing productivity, profitability and environmental sustainability.

We are committed to deliver nutritional solutions for the production of quality food, while ensuring animal health and welfare and respecting the environment. Our specialist teams are able to deliver tailor-made solutions to meet your specific needs.

The reduction of the environmental footprint of premixes depends on both the premix formulation and nutritional supplement concentration. The two examples show the carbon footprint of premixes with varying levels of nutritional supplements. The higher the nutritional supplement concentration, the greater the potential for improvement.



Actual carbon footprint reductions are dependent on the type of nutritional supplements used.

Accurate measurements are key to reducing environmental footprint. To support you on your sustainability journey, in addition to our EPDs, we offer services to help you calculate the carbon footprint of your premixes. Please reach out to your dsm-firmenich contact for more information.

Product name XY

Environmental Product Declaration

Enabling sustainable animal farming along the value chain

The animal farming industry is increasingly in the spotlight to reduce its emissions. Regulators may seek to impose low-carbon product standards, further environmental regulation or tax schemes on animal protein production as an incentive to reduce emissions and steer consumer consumption.

Credible, transparent and science-based measurement is essential to unlocking the value of sustainability and mitigating risks. Verified footprint metrics not only enable the industry to decarbonize, but open new opportunities to support KPI-driven programs (e.g., SBTi Scope 3 targets), sustainability-linked loans and sustainability product labelling to name a few.

Reductions in the impact of animal production can be supported by greater use of sustainably produced nutritional solutions. At dsm-firmenich, we are constantly measuring and seeking to reduce the environmental impact of our products, to ultimately help customers understand their Scope 3 emissions and to reduce their own footprint.



dsm-firmenich, the partner of choice to support your sustainability journey

Climate action

To be a leader in climate action it's important to lead by example. That's why at dsm-firmenich, we are focused on delivering science-based, sustainable and scalable solutions that address global challenges in line with the Sustainable Development Goals (SDGs) agreed by the United Nations.

dsm-firmenich has set **ambitious goals** on reducing its carbon emissions as expressed in our science-based targets:

- 50% absolute reduction of our direct GHG emissions (Scope 1) and emissions from our purchased energy (Scope 2), by 2030.
- 28% intensity reduction of our indirect value chain emissions (Scope 3), by 2030

dsm-firmenich has also set a long-term target to reach net-zero GHG emissions across our value chain before 2050.

To support our Scope 1 target, we have committed to improve our annual average energy efficiency by at least 1% through until 2030.

We have committed to source 100% of our electricity from renewable sources at the earliest possible opportunity through the RE100 initiative. As an intermediate target, by 2030 we aim to obtain 75% of our purchased electricity from renewables.

We are also actively investing in renewable energy installations for our own production facilities across the world, increasing the supply of renewable energy, reducing our Scope 2 emissions.

As the vast majority of Scope 3 emissions are defined by the purchase of raw materials and services, reductions achieved by our supplier portfolio are of eminent importance to realize our Scope 3 targets. Our [CO₂reduce](#) is our supplier engagement program, where we are working in close collaboration with over 200 suppliers on sharing ambitions, exchanging carbon footprint information and the creation of reduction roadmaps for achieving our emissions targets. Through these programs we are able to reduce the carbon footprint of our products and supply our customers with low carbon-intense ingredients, thereby helping them reduce their Scope 3 emissions.

Product name XY

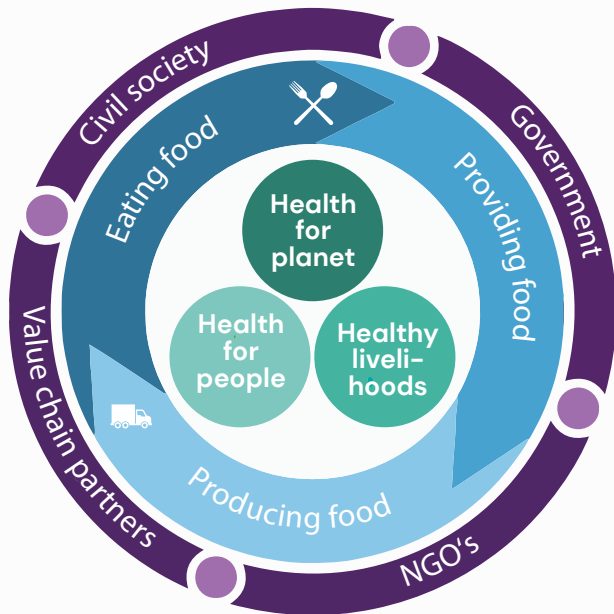
Environmental Product Declaration

Transforming food systems

To further enhance our sustainability engagement, we are one of the first companies to make our societal impact explicit through a set of measurable [Food System Commitments](#) for 2030. By collaborating with our partners, we are committed to enable double-digit on-farm reduction of livestock emissions by 2030, especially:

- Enabling a 20% reduction in greenhouse gas emissions in dairy production
- Enabling a 30% reduction in ammonia emissions from swine farming
- Enabling a 30% reduction in phosphorus emissions from poultry farming

These commitments support our ambition to have a positive and meaningful impact on the world's food systems and contribute to the achievement of the UN SDGs 2, 3, 12 and 13.



dsm-firmenich Food System Commitments

To support our customers on their journey of decarbonization and more sustainable business, we offer a series of services such as the EPDs of our main products, the carbon footprint of our premixes and our Sustell™ service which combines full life cycle assessment of animal protein production with practical, science-based, proven solutions to unlock the value of more sustainable business practices.

At dsm-firmenich Animal Nutrition & Health, we are committed to making animal farming more sustainable and we know that we cannot do it alone. We need the support of our customers, our business partners, our suppliers and other value chain partners.

